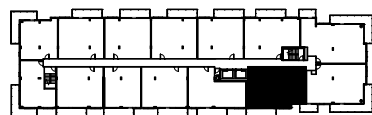


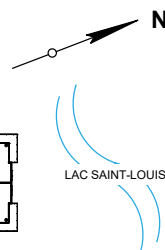
- ① **Cuisine / Kitchen**
12'-3" X 8'-3"
- ② **Salon & S.A.M / Living & Dining**
17'-9" X 18'-9"
- ③ **Chambre des maîtres / Master Bedroom**
10'-2" X 15'-0"
- ④ **Walk-in 1**
5'-4" X 6'-3"
- ⑤ **S.D.B des maîtres / Master Washroom**
8'-10" X 5'-0"
- ⑥ **Chambre 2 / Bedroom 2**
10'-9" X 11'-2"
- ⑦ **Walk-in 2**
7'-4" X 4'-5"
- ⑧ **S.D.B 2 / Washroom 2**
5'-0" X 7'-6"
- ⑨ **Balcon / Balcony**
20'-3" X 5'-3"

LES PLANS SONT SUJETS A MODIFICATIONS SANS PREAVIS.
LES SUPERFICIES INDIQUEES REPRESENTENT LES SURFACES BRUTES INCLUANT LES MURS EXTERIEURS ET MITOYENS.
TOUTES LES DIMENSIONS MONTREES SONT APPROXIMATIVES ET PEUVENT VARIER LORSQUE CONSTRUIT. LE MOBILIER EST MONTRE A TITRE D'INFORMATION SEULEMENT.

PLANS ARE SUBJECT TO MODIFICATIONS WITHOUT PRIOR NOTICE. THE AREAS SHOWN ARE GROSS AREAS THAT INCLUDE EXTERIOR AND MITOYEN WALLS. ALL DIMENSIONS SHOWN ON PLANS ARE APPROXIMATE AND MAY VARY WITH CONSTRUCTION. THE FURNITURE IS SHOWN FOR INFORMATION PURPOSES ONLY.



PLAN CLÉ



UNITÉ: 322, 422, 522, 622, 722

2 CHAMBRE(S)

SUPERFICIE: 1102 PI.CA.

BALCON/TERRASSE: 107 PI.CA.

TOTAL: 1209 PI.CA.

ÉCHELLE / SCALE: 1:75



7/4/2018